

substancearchitecture

An Evolving Practice: Substance Architecture



Learning Objectives

Part 2: Client-Centered Design

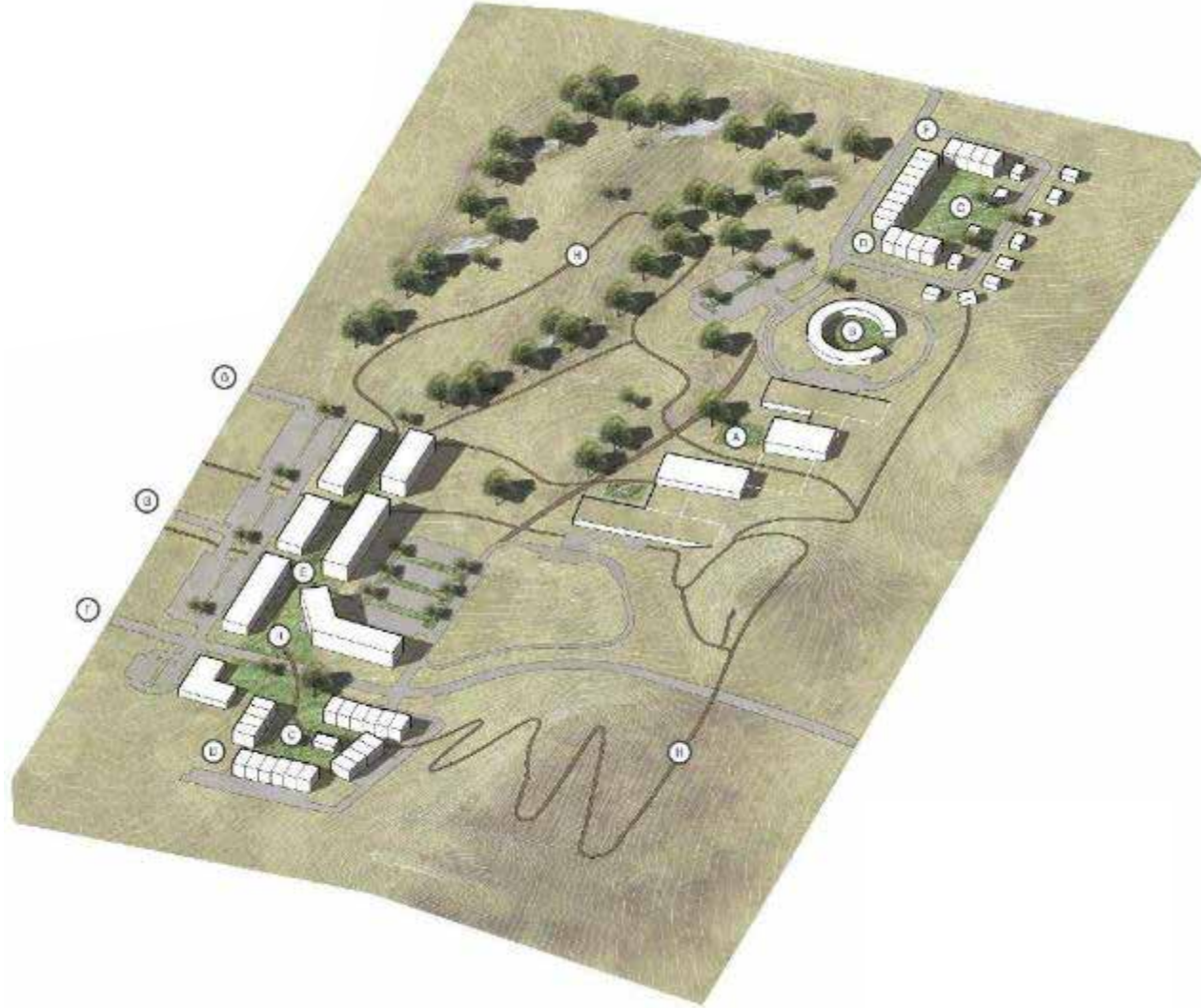
1. Learn how to work with clients during programming and master planning to establish guiding principles to shape a project vision at the onset and how to ensure these principles, including those centered on occupant experience and building performance, are prioritized throughout design.
2. Learn how to prioritize listening to shape a project specific vision, and how architects can translate a client's vision into spaces that support equality as well as the spectrum of human health.
3. Learn how architects can elevate building performance, sustainability, and resiliency on projects whether or not specify LEED, Passive House, Net Zero, or other? certification is pursued.
4. Explore how great design can happen at any scale and budget, incorporating life safety and accessibility requirements while contributing to long-term client satisfaction and repeat engagement that fosters owners' appreciation for the value that these elements bring to their environments.

OWASTE OTI: HOME

Oceti Sakowin Community Academy + Community Development Vision Plan

CREATING A VISION

- A. Oceti Sakowin Community Academy
- B. Powwow Grounds
- C. Community Gathering
- D. Residential Community Development
- E. Mixed-Use Development
- F. Primary Entrance
- G. Secondary Entrance
- H. Trail Loop



Vision Plan | The Oceci Sakowin Community Academy is the heart of this development and has the capacity to welcome, inspire and influence generations of Indigenous youth. Spaces like powwow grounds and outdoor classrooms are designed for ceremony, tradition, star knowledge, and storytelling. Habitat for native plant species, medicinal and food gardens, and open land provide spaces for people to connect to nature and learn about traditional stewardship and use of local plants.





NDN Team Members express enthusiasm about continuing conversations at the Goal Setting Workshop on August 31, 2021.



Robby Burroughs and Andrew Ironshell listen at the Goal Setting Workshop on August 31, 2021.



Project team members listen as Sunny Red Bear adds to the discussion at the Goal Setting Workshop.



NDN Team members listen at the Goal Setting Workshop on August 30, 2021.



Goal Setting Process

Framework for Sustainable Performance



Design for Integration



Design for Community



Design for Ecology



Design for Water



Design for Economy



Design for Energy



Design for Wellness



Design for Resources



Design for Change



Design for Discovery

PROJECT GOALS

Through the process of developing the school site, the 7 Essential Understandings shaped the perspective of the team and supported goal setting and design processes. Using the Essential Understandings, project goals were established in each category:

OSEU 1: LANDS & ENVIRONMENT

- Goal 1.1 Recognize and value the land as it is now, and as it was for the Ancestors
- Goal 1.2 Help students identify with the land and engage in stewardship
- Goal 1.3 Provide a rich, immersive sensory experience
- Goal 1.4 Preserve and protect living systems for the next seven generations
- Goal 1.5 Develop a farm-to-table program within a 50-mile radius

OSEU 2: IDENTITY & RESILIENCY

- Goal 2.1 Provide comfort that feels like home
- Goal 2.2 Encourage self-determination and resilience through a return to traditional lifeways
- Goal 2.3 Encourage lifelong learning
- Goal 2.4 Plan for independence and resilience

OSEU 3: CULTURE & LANGUAGE

- Goal 3.1 Embed cultural identity and language throughout the school and land
- Goal 3.2 Build trust through authenticity of language, history, and behavior modeling
- Goal 3.3 Relate teachings and spaces to sun and star knowledge
- Goal 3.4 Provide opportunities to listen to and understand Mother Earth

OSEU 4: KINSHIP & HARMONY

- Goal 4.1 Build empowering relationships with elders, the community, and the land
- Goal 4.2 Provide safety and inclusion
- Goal 4.3 Create a welcoming community hub

OSEU 5: ORAL TRADITION & STORY

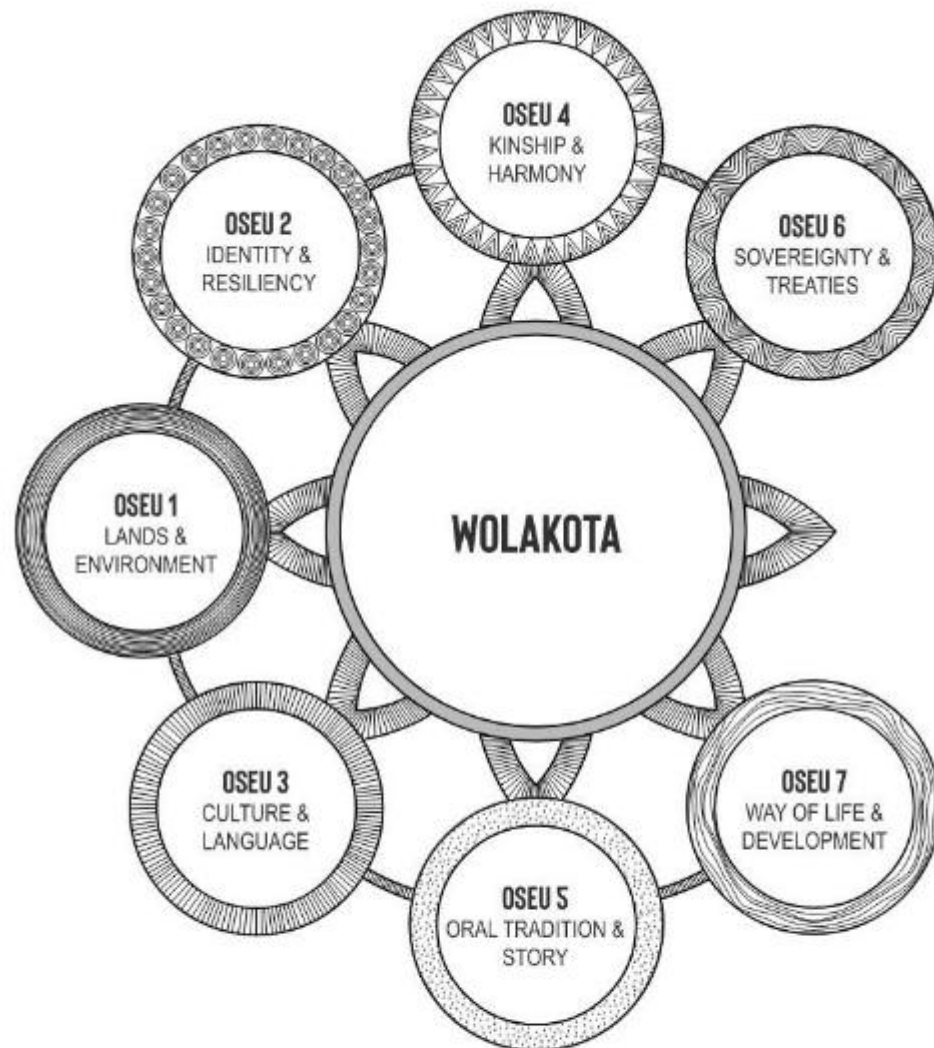
- Goal 5.1 Teach and celebrate native traditions and ceremonies
- Goal 5.2 Create a compelling storytelling platform
- Goal 5.3 Teach sustainability through the buildings and site

OSEU 6: SOVEREIGNTY & TREATIES

- Goal 6.1 Provide spaces that support teachings about reciprocity with the land
- Goal 6.2 Provide physical opportunities to teach about climate justice
- Goal 6.3 Inspire a movement of educating indigenous children with authenticity
- Goal 6.4 Keep funding options open

OSEU 7: WAY OF LIFE & DEVELOPMENT

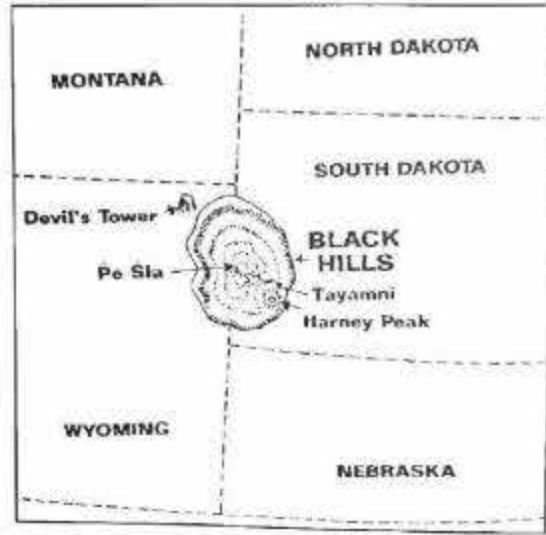
- Goal 7.1 Reduce operational expenses while generating value and/or revenue
- Goal 7.2 Encourage Indigenization and Indigenuity
- Goal 7.3 Invest in kids: WAKHANHEZA = sacred beings



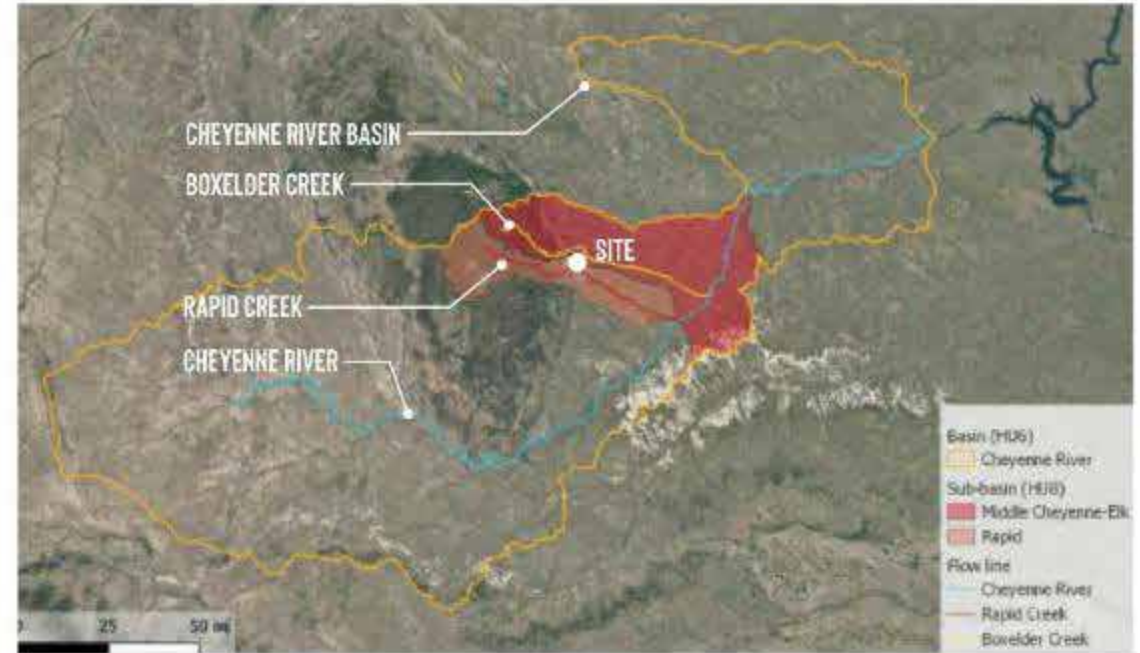
Throughout this document, variations of the Oceti Sakowin Essential Understandings (OSEU) diagram, seen above, can be found on each of the focus pages. On these pages, the diagram highlights the OSEUs that are most relevant to each section. These diagrams are a reminder that the Essential Understandings were a critical touchstone throughout the project process and documentation.

The Site | One hundred million years ago, an ancient sea stretching from the Gulf of Mexico through the middle of the US and Canada began its retreat, and volcanic activity created formations at Mato Tipila (Devil's Tower), Mato Paha (Bear Butte), and HeSapa (The Black Hills).

The 66-acre site sits east of the foothills of the Black Hills, north of downtown Rapid City, South Dakota. Growing neighborhoods frame the west and north site boundaries, with grasslands extending east of a prominent ridge line. Memory and a sense of home are fundamental to this site - the hilltops along the east of the site offer views to Mato Paha (Bear Butte) in the northwest and toward HeSapa (The Black Hills) in the southwest.

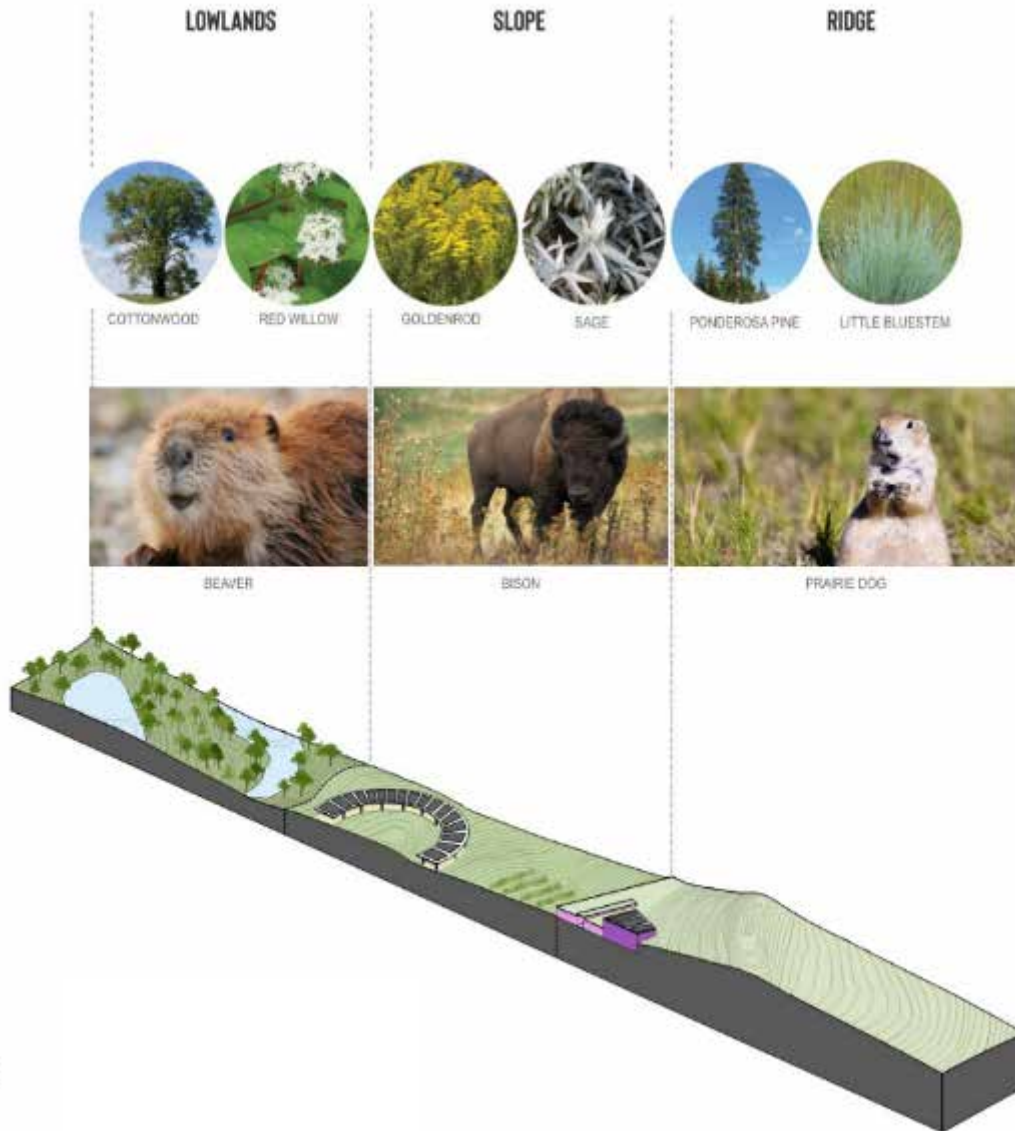


Site diagram: geological zones



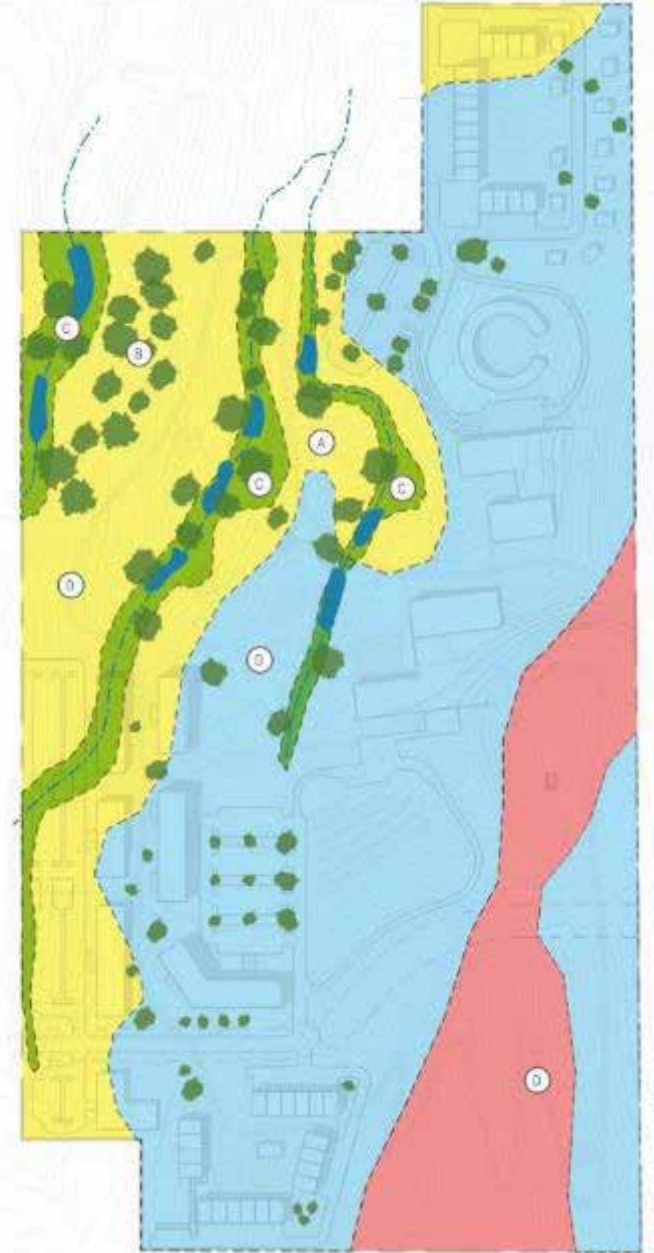
Site diagram: watershed

FOCUS: ECOSYSTEMS AND LANDSCAPE RESTORATION



- A Water Management / Beaver Dam Analog
- B Cottonwood Groves
- C Wetland Zone Preservation
- D Grasslands / Buffalo Willow Analog

- Wetland Drain
- Lowland (KYC)
- Slope (McC)
- Ridge (PcF)
- Tree



FOCUS: WATER



EU 1.4

Goal 1.4: Preserve and protect living systems for the next seven generations. Water will be used responsibly, incorporating strategies like rainwater collection, greywater reuse, native plants with potable irrigation, and condensate collection.

EU 2.3

Goal 2.3: Encourage lifelong learning. Outdoor and living systems provide literacy within the traditional ecological knowledge and scientific framework. Students will be empowered with Traditional Ecological Knowledge (TEK) to help/share with those maintaining and developing other NDN projects.



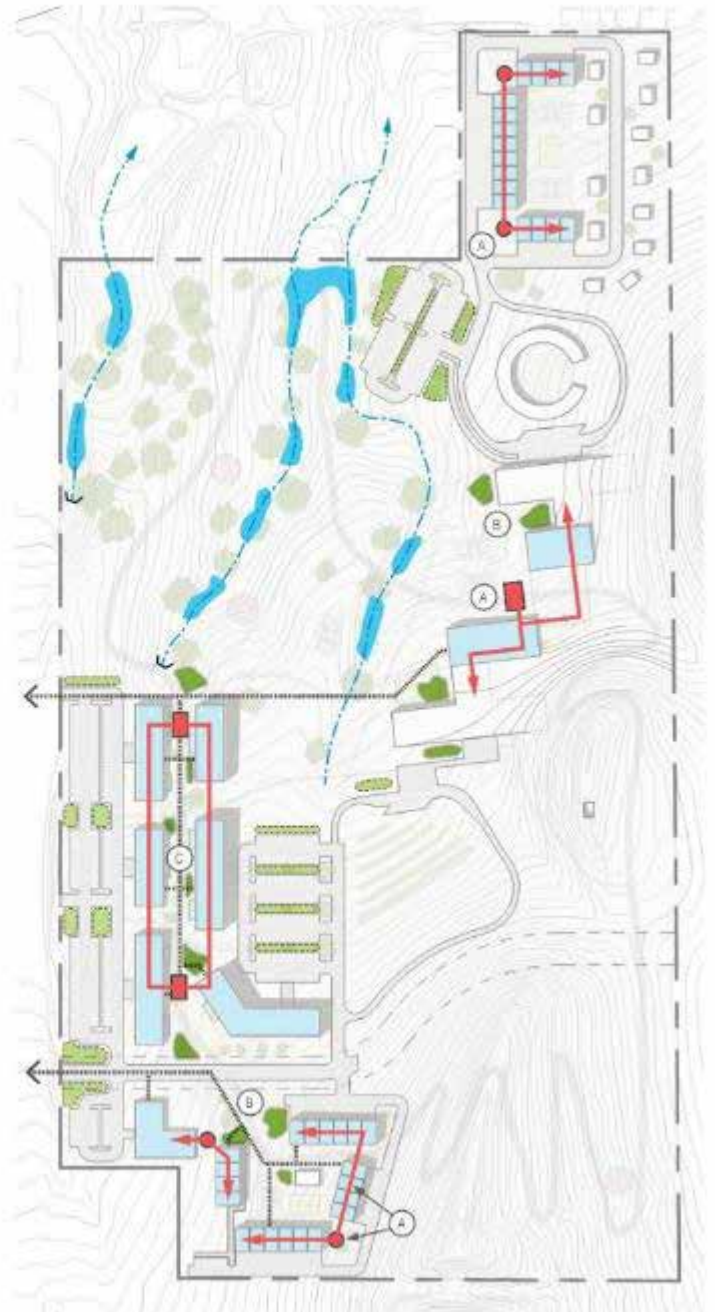
EU 5.1

Goal 5.1: Teach and celebrate native traditions and ceremonies. Inspiring spaces like rain gardens can be used for Elders to connect with students and the community, to hand down traditional teachings and stories. Rain drums, performance areas, and wetlands reconstruction are storm water best practices that activate with rain.

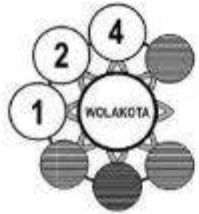
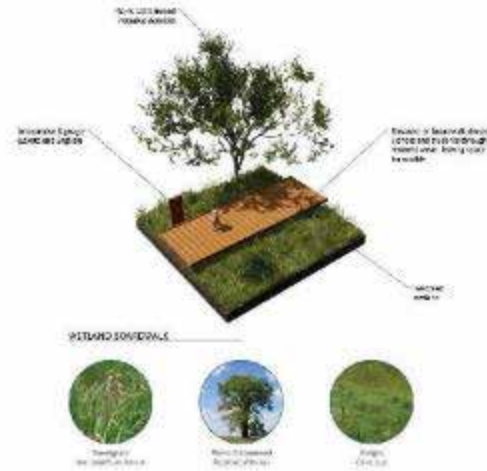
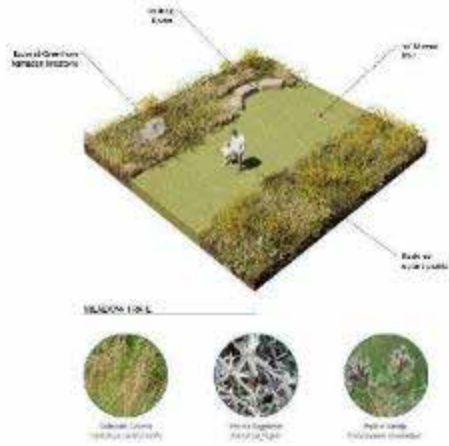


- 1 LAND & ENVIRONMENT
- 2 IDENTITY & RESILIENCY
- 5 ORAL TRADITION & STORY

- A. Water Reuse Infrastructure
- B. Rain gardens Adjacent to Gathering
- C. Greenway Water Infrastructure
- Infiltration zone
- Flow Line
- Roof-to Rainwater Collection
- Underground Cistern
- Non-potable Water Distribution
- Black Water
- Bioswale
- Rain Garden



FOCUS: GREENWAY AND TRAIL SYSTEM

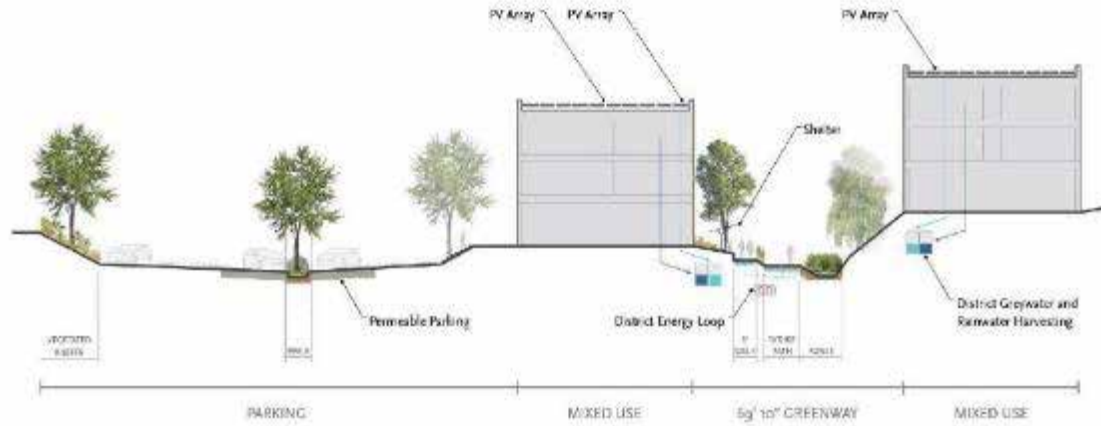
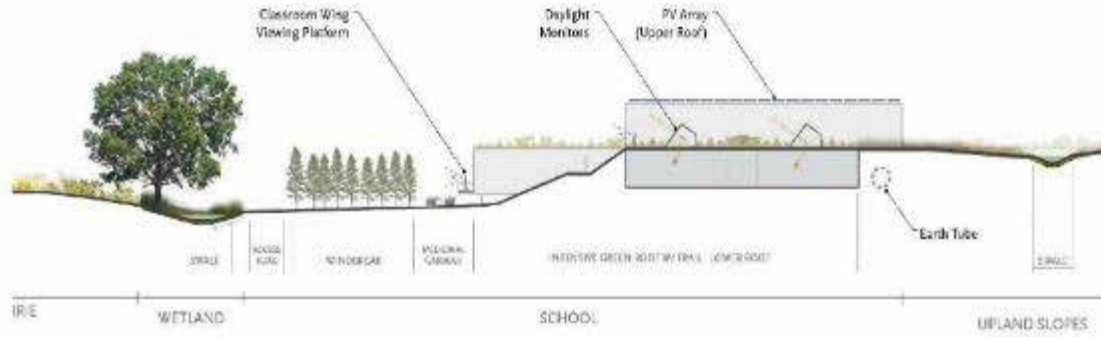


- 1 LAND & ENVIRONMENT
- 2 IDENTITY & RESILIENCY
- 3 KINSHIP & HARMONY
- 4

- A. Star Knowledge Classroom
 - B. Powwow Grounds
 - C. Outdoor Classroom
 - D. Haines Ave. Trailhead
 - E. School Play and Garden Plots
 - F. Accessible Roof
 - G. Community Gathering
 - H. 1.5-mile Recreational Trail / XC Course
- Accessible Trail (10ft)
 - Boardwalk (10ft)
 - Fire Access / Maintenance Rd (12ft)
 - Gravel / Mown Path (3ft)
 - Gathering / Play
 - Greenway



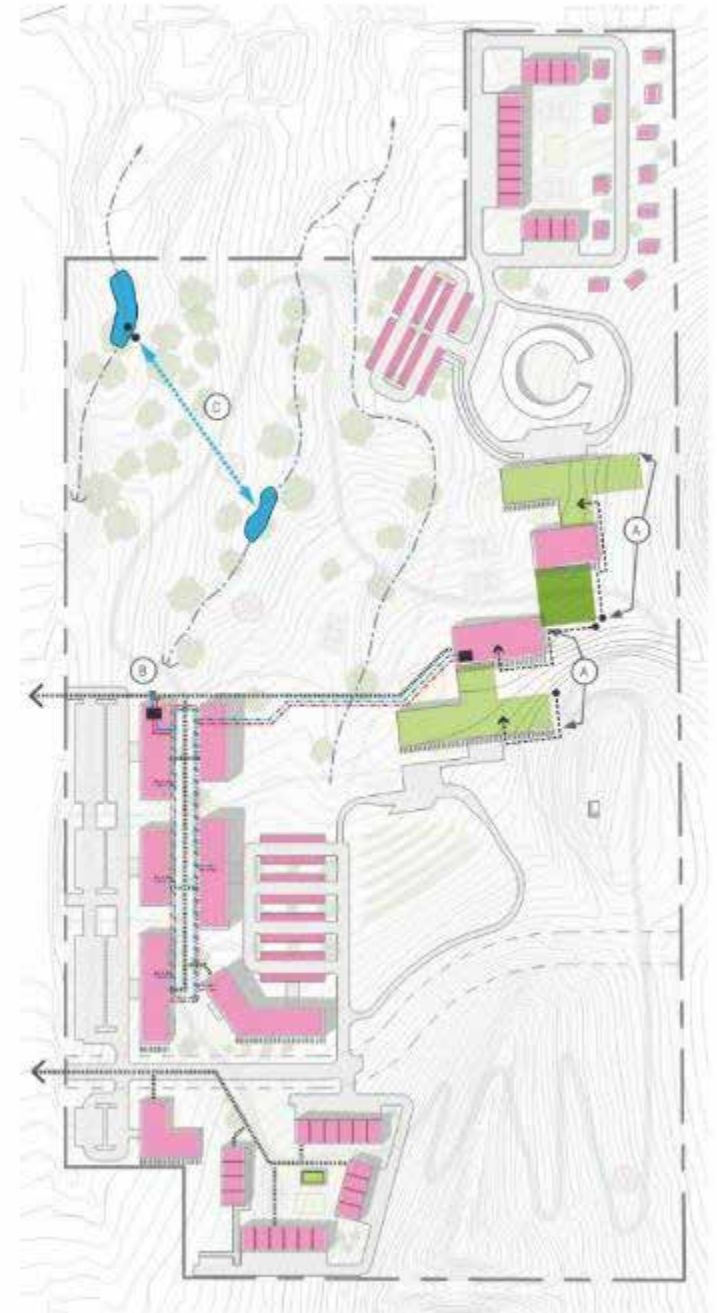
FOCUS: ENERGY



- ① LAND & ENVIRONMENT
- ② IDENTITY & RESILIENCY
- ⑥ KINSHIP & HARMONY
- ⑦ WAY OF LIFE & DEVELOPMENT

- A Engage Building into Hillside
- B Sanitary Line Heat Exchange
- C Wind Pump Energy Generation

- Roof-top PV Array
- Vegetated Roof
- Sanitary Discharge
- Solar Wall
- District Energy Share
- Earthtube Air Intake
- Water Pool





- 1 LAND & ENVIRONMENT: WINTER GARDENS BRING NATURE INDOORS
- 2 IDENTITY & RESILIENCY: THE STRUCTURE ECHOES TRADITIONAL WAYS OF BUILDING
- 3 CULTURE & LANGUAGE: BOOKS BY INDIGENOUS AUTHORS AND ARTISTS
- 4 KINSHIP & HARMONY: A SAFE SPACE FOR COMMUNITY AND FRIENDSHIP
- 5 ORAL TRADITION & STORY: A GATHERING PLACE FOR STORYTELLING
- 6 SOVEREIGNTY & TREATIES: LIBRARY OF INDIGENOUS LANGUAGE, HISTORY, AND CULTURE
- 7 WAY OF LIFE & DEVELOPMENT: SAGE AND OTHER MEDICINAL PLANTS PROVIDE HEALING FRAGRANCE



Wakatakizja abantamun. In janki na or na
Ozake ki tabo. In unpa abantamun zebeni
Mitakuyekloba tanyan. Inbaca na unpa
Wauusitabo. Inkocasi abantamun zebeni.

Wo I'ee Q'olew' mo
Itowapitio yuna. Bantakuyasa na abantamun zebeni
Wamayankikwato. Inca. Inwapa wupa. Bantakuyasa
He. Inyeyo. Bantamun.

- ① LAND & ENVIRONMENT: ABUNDANT NATURAL LIGHT AND ACCESS TO THE OUTDOORS
- ② IDENTITY & RESILIENCY: SACRED SITES ARE REFERENCED
- ③ CULTURE & LANGUAGE: ARTWORK AND SIGNAGE ARE DISPLAYED IN LAKOTA
- ④ KINSHIP & HARMONY: A SAFE SPACE FOR COMMUNITY AND FRIENDSHIP
- ⑤ ORAL TRADITION & STORY: ELDERS AND TEACHERS SHARE WISDOM, STORY, AND MEMORY
- ⑥ SOVEREIGNTY & TREATIES: STUDENTS ARE SURROUNDED WITH INDIGENOUS HISTORY
- ⑦ WAY OF LIFE & DEVELOPMENT: OCETI SAKOWIN UNDERSTANDINGS AT THE HEART OF THE SCHOOL



Lely North America

Creating a client-specific vision



IMPLEMENTING A VISION



Master Plan



Client Values

A sustainable, profitable, and enjoyable future in farming

Animal welfare

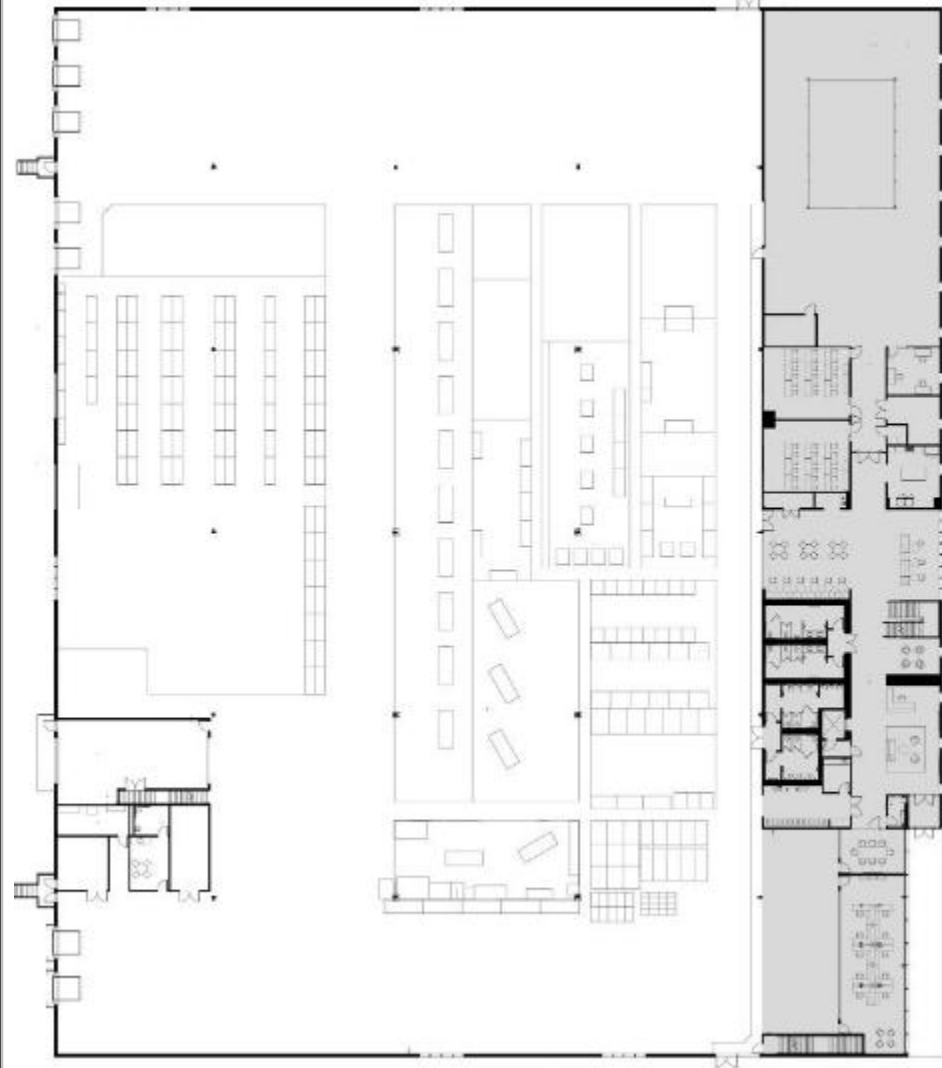
Improved environment

Sustainable and nutritional dairy products

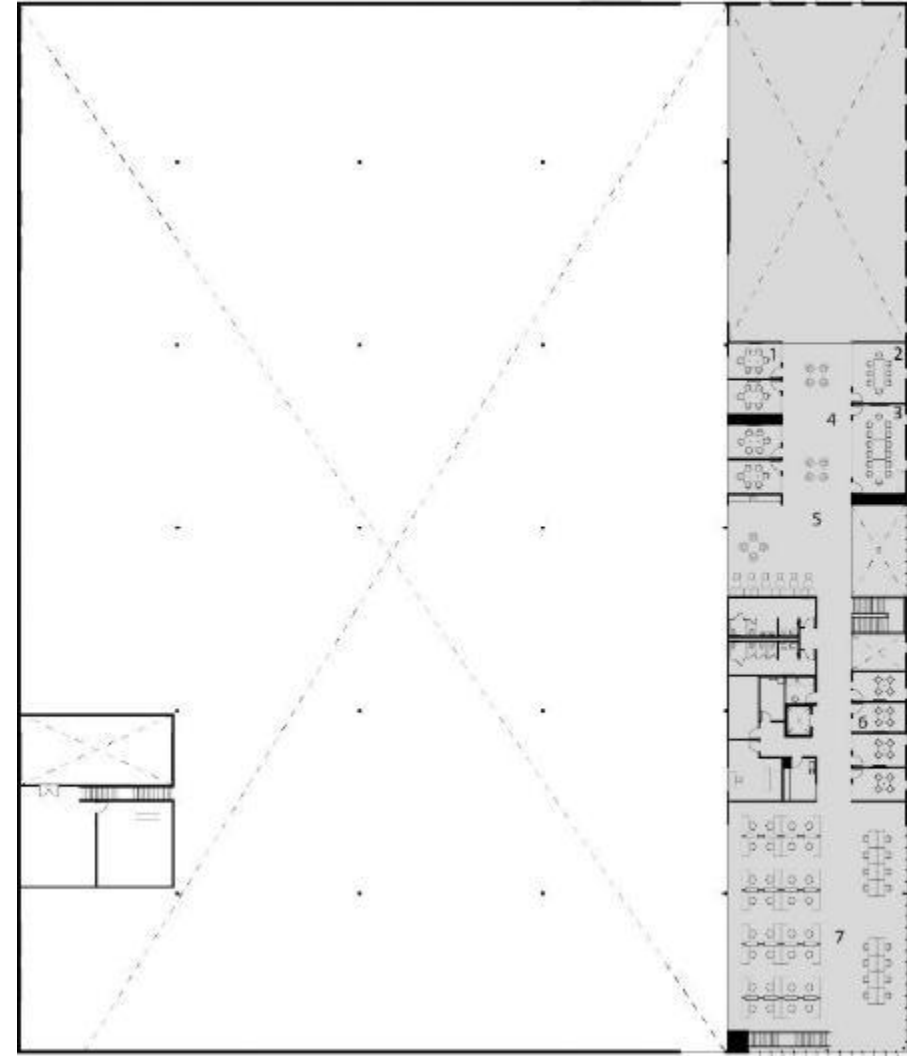
Buy-in from consumers

Farmer prosperity

Floor Plans

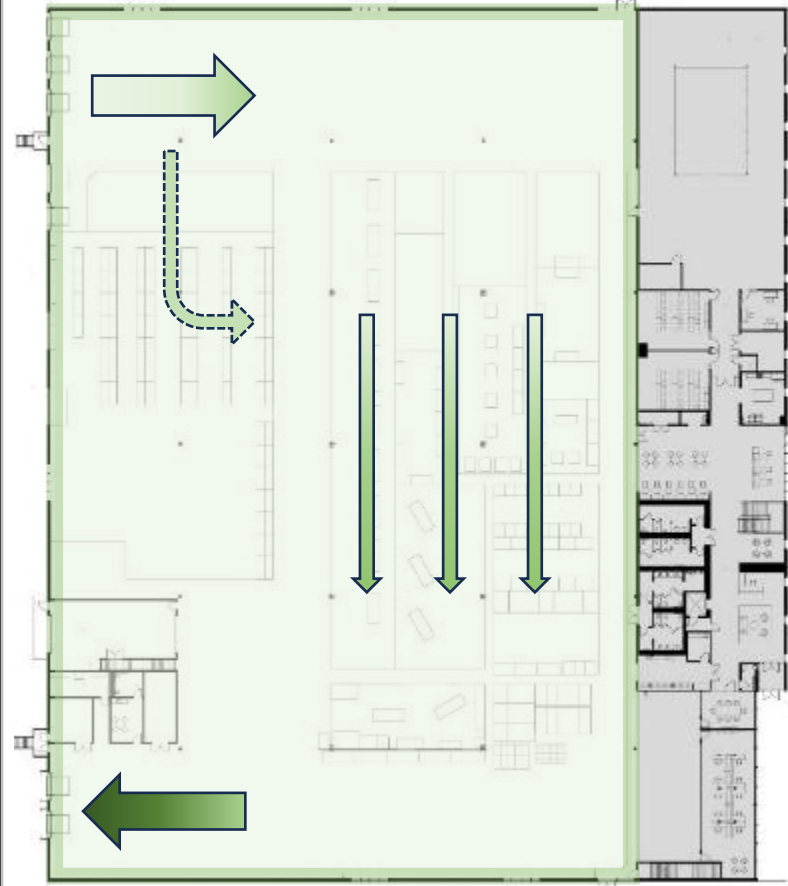


LEVEL 1



LEVEL 2

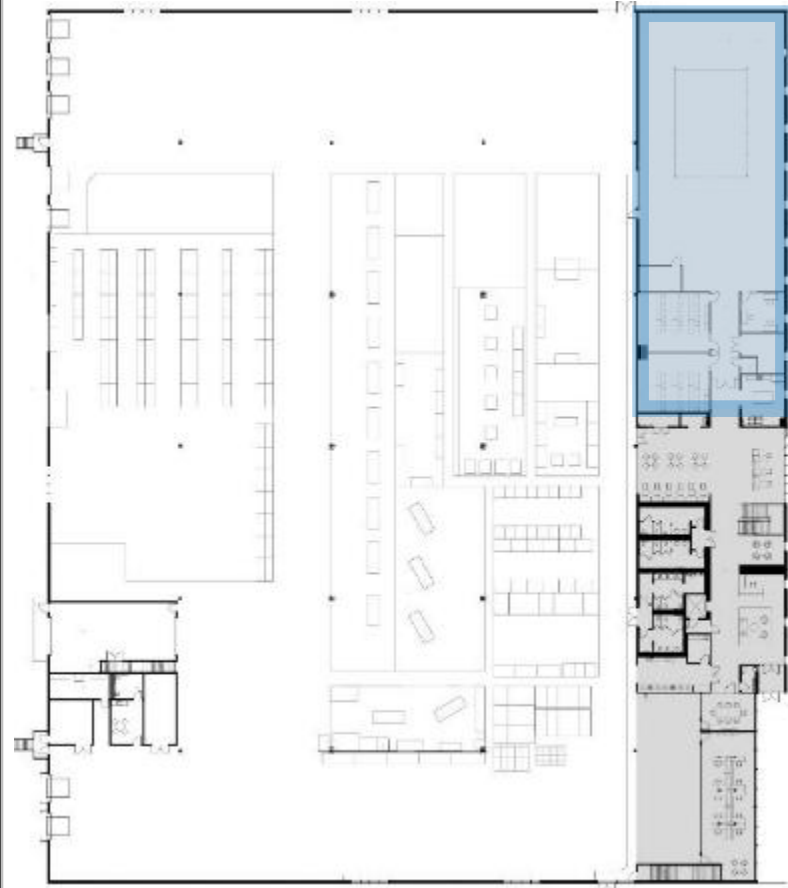
Floor Plans



LEVEL 1



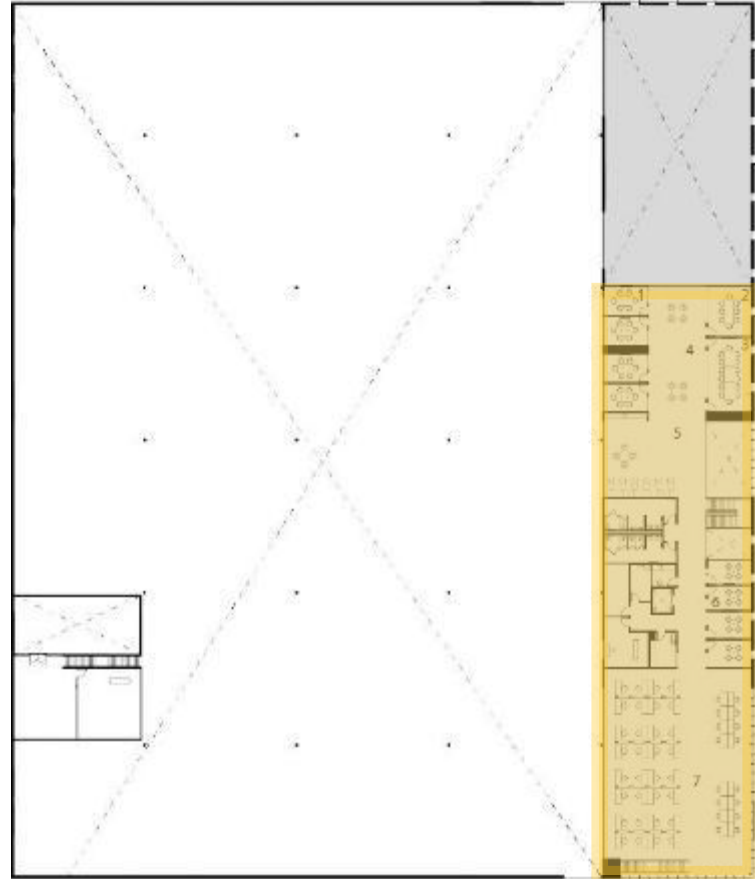
Floor Plans



LEVEL 1



Floor Plans



LEVEL 2



IMPLEMENTING A VISION



Photography by Corey Gaffer

IMPLEMENTING A VISION



IMPLEMENTING A VISION



IMPLEMENTING A VISION



IMPLEMENTING A VISION



IMPLEMENTING A VISION



Iowa State University Student Innovation Center

Elevating building performance



Project in collaboration with Kieran Timberlake
Photography by Peter Aaron/OTTO and Tom Kessler



RESEARCH

- Stakeholder meetings
- Establish project goals



WHAT IS THE CULTURE?

Inclusiveness
Welcoming
Free
Unstructured
Serendipitous
Transparency
Pedagogical

HOW DOES IT HAPPEN?

Creation
Experimentation
Experiential
Accessible

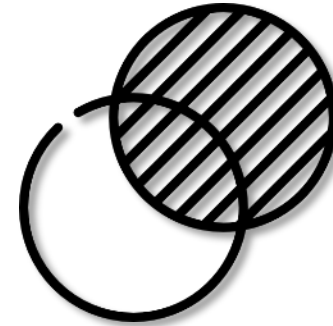
WHAT DOES IT NEED TO BE?

Flexible
Improvisational
Dirty Space / Clean Space
Community Space
Outdoor Space
Cooperative
Student-Centric

PROJECT GOALS



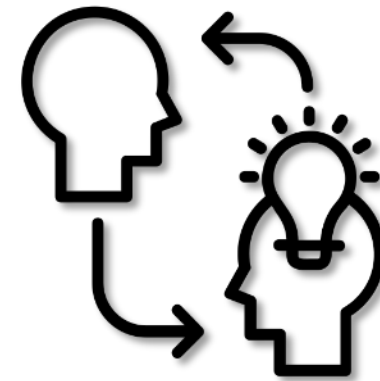
ICONIC



TRANSPARENT



SUSTAINABLE

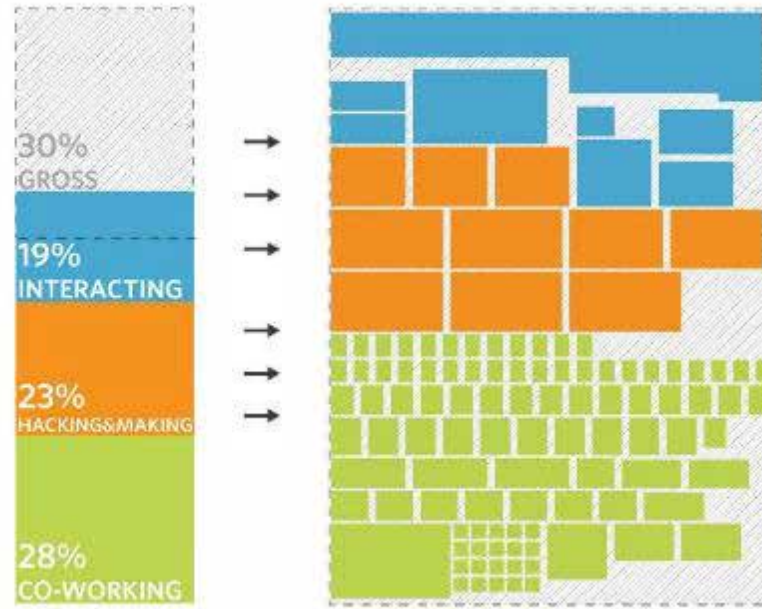


SHARING IDEAS

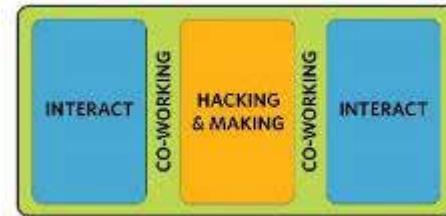
PROGRAMMING

- Student survey
- Space type development
- Space analog exercise

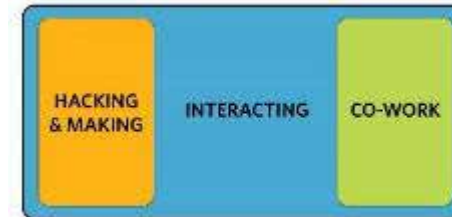
BUILDING PROGRAM



OPEN WORKSPACE



BEE HIVES



TOWN SQUARE



PATCHWORK QUILT



PROGRAMMING

- Floor plans



Basement



Level One



Level Two



Level Three



Level Four

- Interacting
- Hacking & Making
- Co-Working
- Administration
- Special Projects
- Building Support



PROJECT TEAM

DESIGNERS

CONTRACTORS

KIERAN TIMBERLAKE

IOWA STATE UNIVERSITY

substancearchitecture

kpff

IMEG

WISE
handling carbon with care
LEED consulting & architecture

Roofmeadow
Green roofs. For good.

W.J. Higgins
& ASSOCIATES, INC.

BAKERGROUP
Foodservice & Hospitality Consultants

SNYDER
& ASSOCIATES

STECKER-HARMSEN, INC.

JENSEN HUGHES
Advancing the Science of Safety

LERCH BATES

SPECcetera
specifications...and more.

HENKEL
Contractor Company

JEDUNN
CONSTRUCTION

AWES

SME
Build Better

HILSBECK SCHACHT INC.
Commercial Contractor

JCTOLAND
PAINTING

Des Moines Marble & Mantel Co.

Electric Inc.

RAPIDS
Industrial Equipment Co.

PETERSON
CONTRACTORS
INC.

CECO
Manning Selverit Mechanical Contractors

ConStruct, Inc.

Schumacher

BARRIER
TECHNOLOGIES

VIKING
AUTOMATIC SPRINKLER CO.

CALIBER
CONCRETE LLC

1ST INTERIORS, Inc.

CHALLENGES

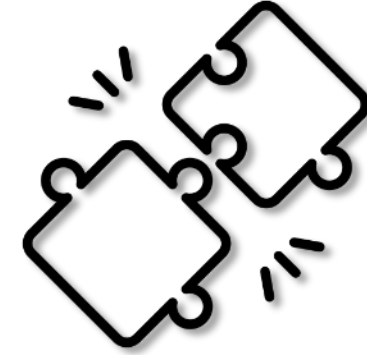


Sustainability goal: LEED Gold

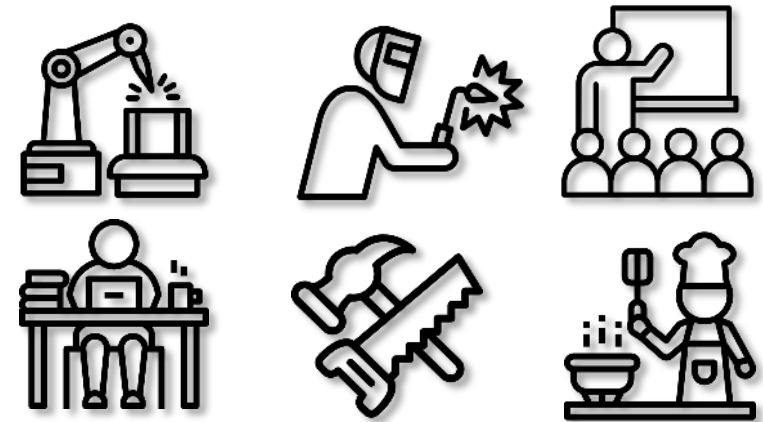
- 33% energy cost savings over code-required minimum



Glass enclosure



Flexible spaces and systems



Multiple space types + complex geometry

- Hazardous exhausts – high volumes

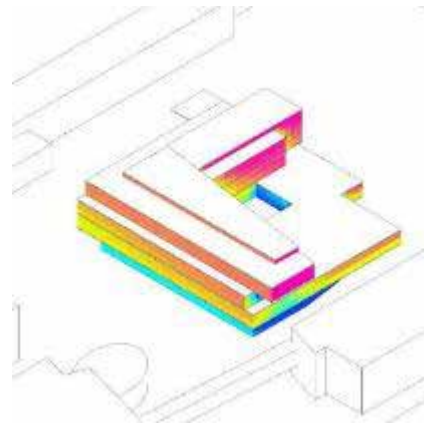
TECHNICAL DESIGN
CHALLENGES

Building enclosure

- Custom curtain wall
- Development of design



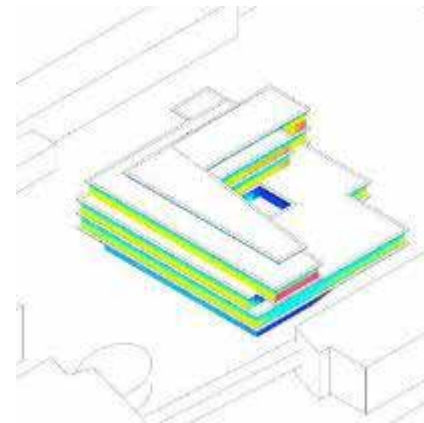
BASELINE
NO SHADING DEVICES



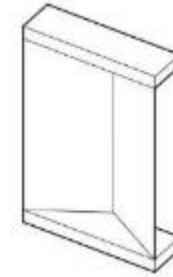
kWh/m ² /average	607.9
% REDUCTION	BASELINE



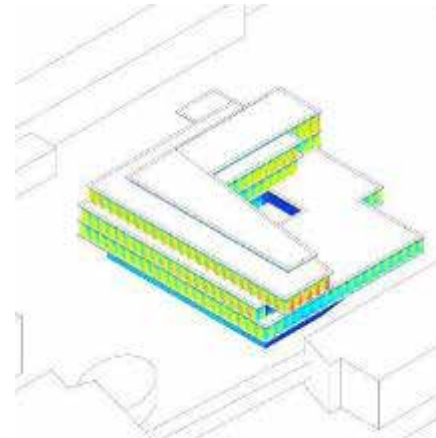
HORIZONTAL SHADING
3'-0" DEPTH PROJECTION @
EACH FLOOR



kWh/m ² /average	429.1
% REDUCTION	29%



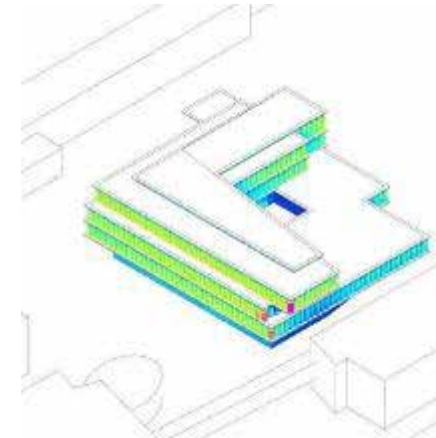
HORIZONTAL SHADING
W/ 30 DEG PLEAT
3'-0" DEPTH PROJECTION
@ EACH FLOOR



kWh/m ² /average	303.3
% REDUCTION	50%



HORIZONTAL SHADING
W/ 45 DEG PLEAT
3'-0" DEPTH WITH 45
DEGREE PLEAT

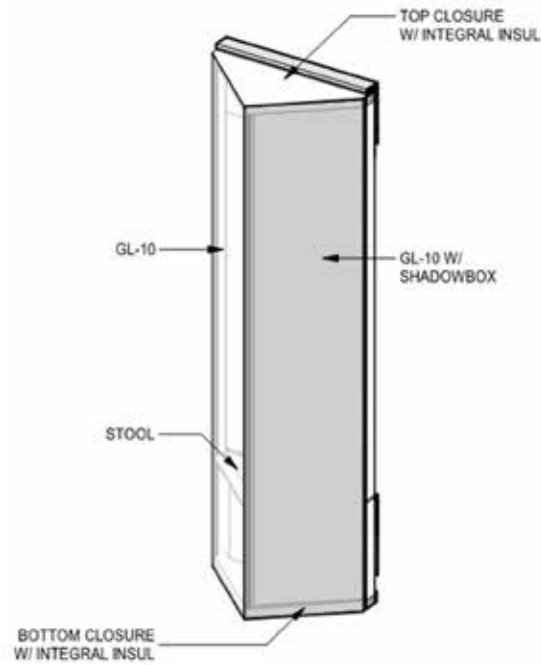


kWh/m ² /average	280.9
% REDUCTION	53%

TECHNICAL DESIGN CHALLENGES

Building enclosure

- Detailing and testing
- Installation



Unitized design



Thermal modeling



Mockup testing



Installation progress

TECHNICAL DESIGN
CHALLENGES

Building enclosure

- Façade performance

Solutions

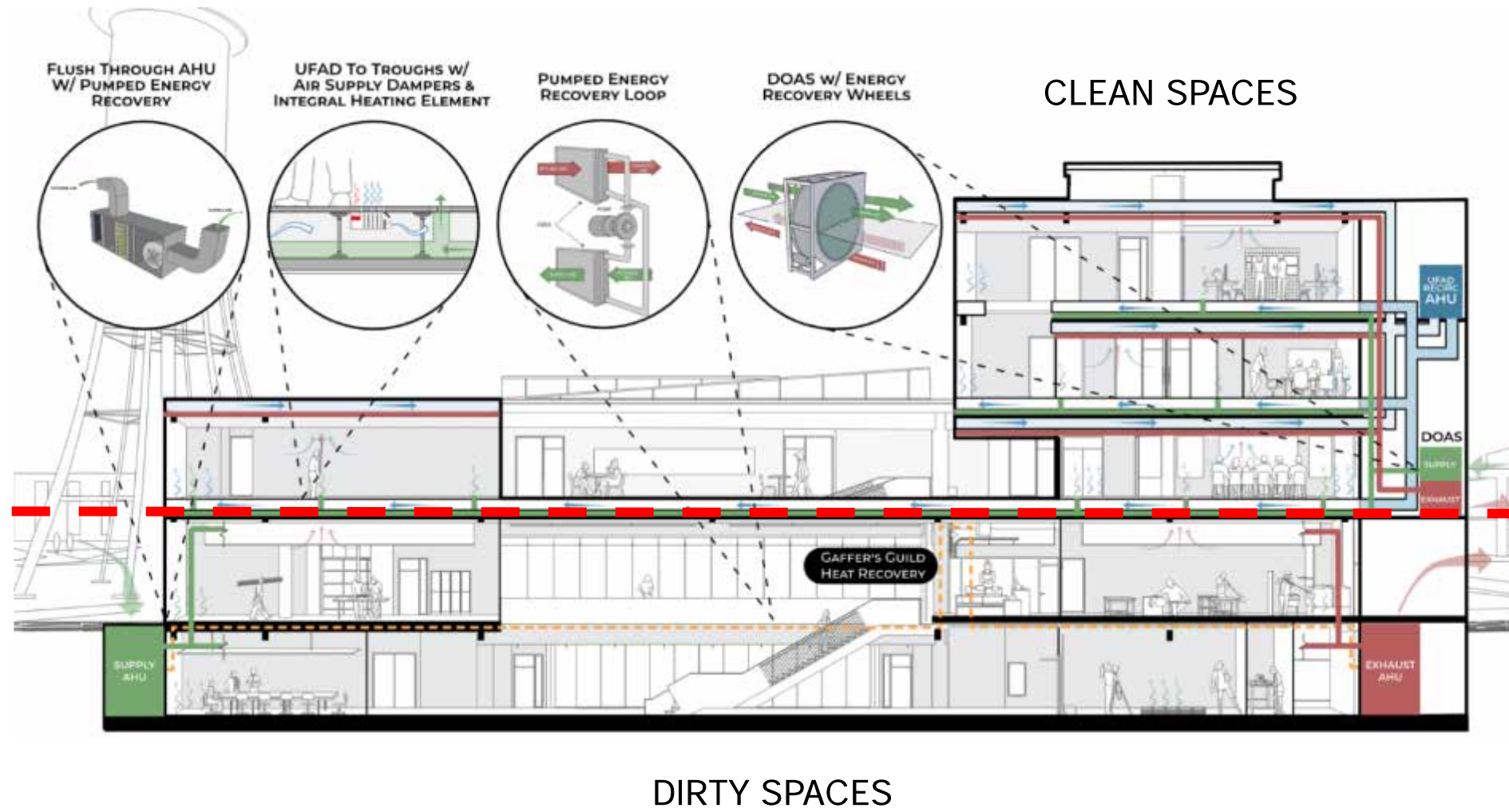
- Selective use of opaque/higher R-value wall assemblies



Project in collaboration with Kieran Timberlake
Photography by Peter Aaron/OTTO and Tom Kessler

TECHNICAL DESIGN
CHALLENGES

HVAC solutions



TECHNICAL DESIGN
CHALLENGES

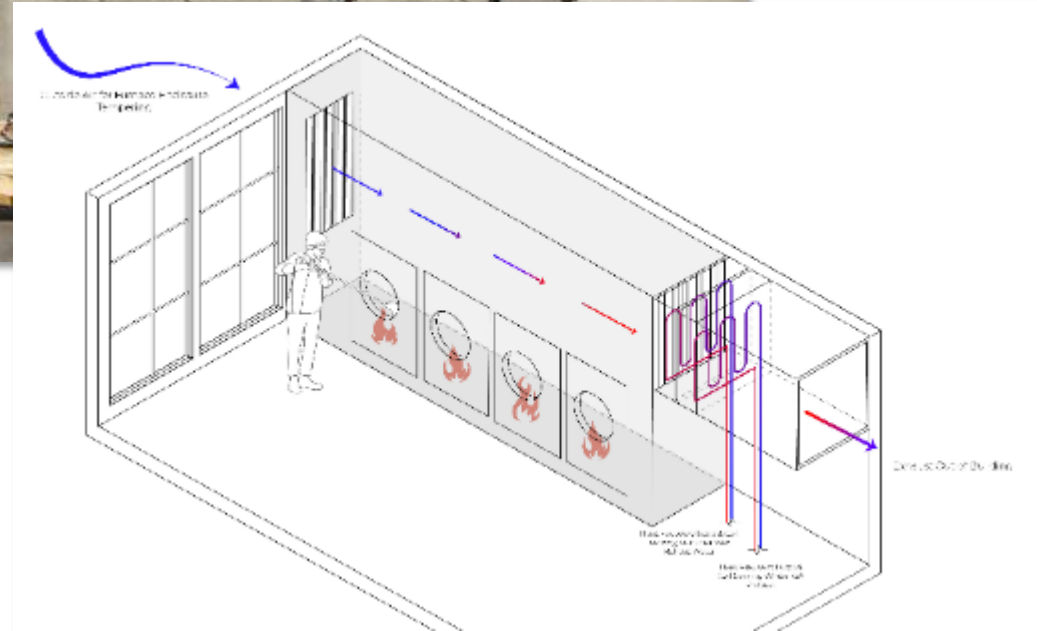
HVAC solutions



BUILDING PERFORMANCE

TECHNICAL DESIGN CHALLENGES

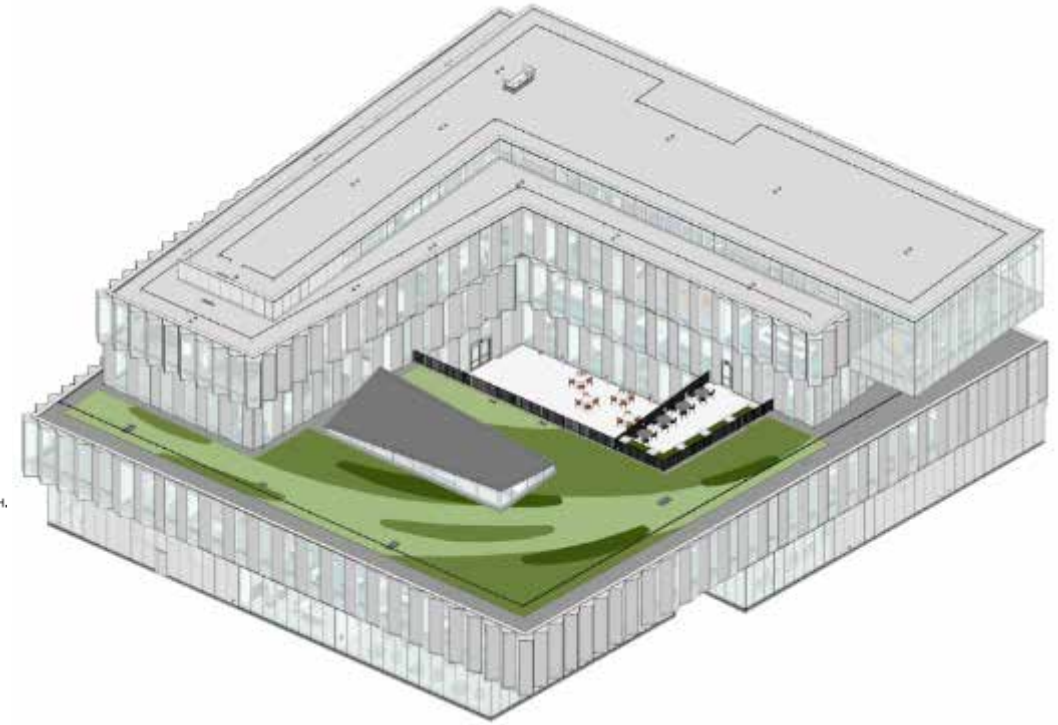
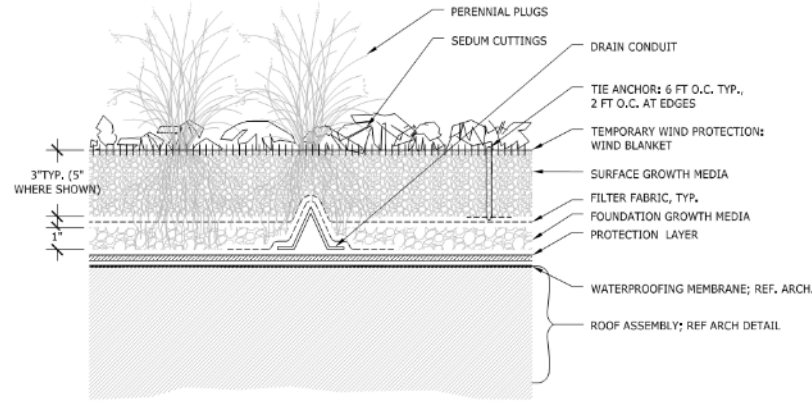
Energy recovery



SUSTAINABLE MEASURES

Green roof


Storm water detention



BUILDING PERFORMANCE
OUTCOMES

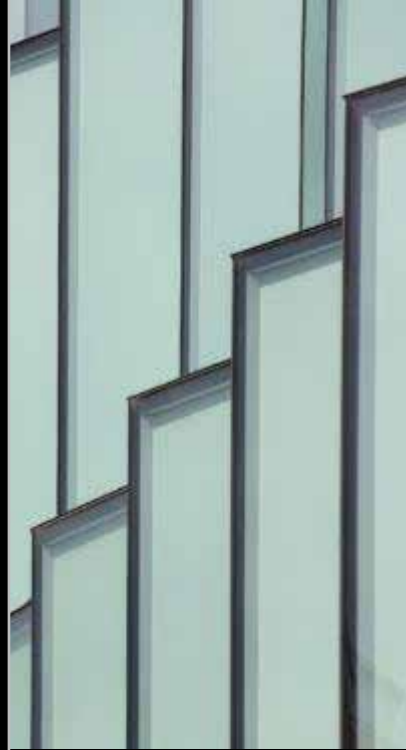
Results

- 41.69% Water use reduction
- 34.56% Energy cost reduction
- 32.97% Energy use reduction

- LEED Gold, v2009
 -  18 of 27 Sustainable Sites
 -  8 of 20 Water Efficiency
 -  16 of 35 Energy and Atmosphere
 -  4 of 14 Materials and Resources
 -  5 of 15 Indoor Environmental Quality
 -  6 of 6 Innovation
 -  4 of 4 Regional Priorities



BUILDING PERFORMANCE



Photography by Corey Gaffer



NDN SUSTAINABILITY GOAL CRITERIA

7 Essential Understandings

1: Lands & Environment

- 1.1 Recognize and value the land as it is now, and as it was for the Ancestors
- 1.2 Help students identify with the land and engage in stewardship
- 1.3 Provide a rich, immersive sensory experience
- 1.4 Preserve and protect living systems for the next seven generations
- 1.5 Develop a farm-to-table program within a 50-mile radius

- Water is precious and provides life, use it wisely
- Contribute to a healthy regional watershed
- Support living systems of all types and improve the health of those systems
- Construct facilities with Seventh Generation Principle thinking
- Provide healthy environments that are free of toxic chemicals and do no harm to inhabitants

2: Identity & Resiliency

- 2.1 Provide comfort that feels like home
- 2.2 Encourage self-determination and resilience through a return to traditional lifeways
- 2.3 Encourage lifelong learning
- 2.4 Plan for independence and resilience

3: Culture & Language

- 3.1 Embed cultural identity and language throughout the school and land
- 3.2 Build trust through authenticity of language, history, and behavior modeling
- 3.3 Relate teachings and spaces to sun and star knowledge
- 3.4 Provide opportunities to listen to and understand Mother Earth

4: Kinship & Harmony

- 4.1 Build empowering relationships with elders, the community, and the land
- 4.2 Provide safety and inclusion
- 4.3 Create a welcoming community hub

Promote human connection

5: Oral Tradition & Story

- 5.1 Teach and celebrate native traditions and ceremonies
- 5.2 Create a compelling storytelling platform
- 5.3 Teach sustainability through the buildings and site

6: Sovereignty & Treaties

- 6.1 Provide spaces that support teachings and reciprocity with the land
- 6.2 Provide physical opportunities to teach about climate justice
- 6.3 Inspire a movement of educating indigenous children with authenticity
- 6.4 Keep funding options open

Alleviate future risk and vulnerabilities from social, economic, and environmental change

7: Way of Life & Development

- 7.1 Reduce operational expenses while generating value and/or revenue
- 7.2 Encourage indigenization and indigenuity
- 7.3 Invest in Kids: WAKHANHEZA = sacred beings

- Balance first costs with long-term value
- Minimize future maintenance costs by building with durable long lasting materials
- Power the project by clean, renewable energy sources
- Strive for net zero energy and net zero carbon on the project site

Support equitable labor practices in construction and the supply chain

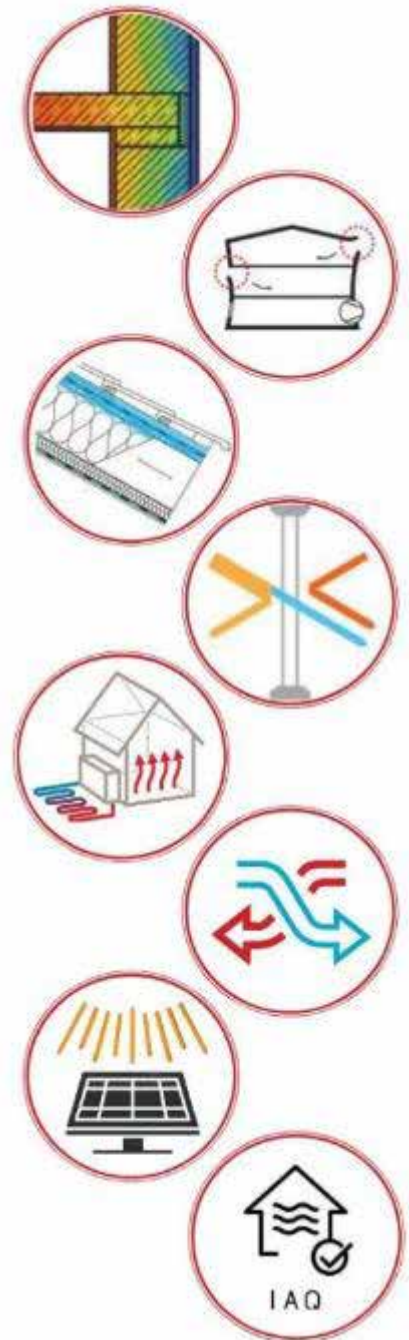
TAILORED
SUSTAINABILITY
CRITERIA

PASSIVE-FIRST APPROACH

HIGH PERFORMANCE SHELL (TIGHT ENCLOSURE)

EFFICIENT HEATING & COOLING

INDOOR AIR QUALITY



PAIRING STRATEGIES TO REBATES AND INCENTIVES

REBATES AND INCENTIVES

\$14,652
Amount you can save off your system (Net Rebate)

\$14,652
Additional Credit (30% of your system)

\$0
Net Cost

REBATE A CREDIT ON YOUR SYSTEM
By 2022 you'll have paid for the solar. Let solar become a savings strategy.

MAKE THE WORLD A BETTER PLACE

YOUR SAVINGS WITH SOLAR

COMPARE YOUR COSTS WITH SOLAR TO GO.

\$32,346

WITH SOLAR	WITHOUT SOLAR
\$9 Monthly Payment	\$161 Monthly Payment
\$9 Upfront System Cost	\$318 Upfront System Cost

*Based on a 5kW system with a 10-year payback period. Actual savings may vary based on system size, location, and incentives available.

IRA Investment for Tribal and Indigenous Communities

Our most cutting-edge funding for clean energy, energy system transformation and justice reduction.

\$722 million

[Download the report](#)

JUSTICE40

A WHOLE-OF-GOVERNMENT INITIATIVE

ENVIRONMENTAL JUSTICE

"We'll create good jobs for millions of Americans...and we'll do it all to withstand the devastating effects of climate change and promote environmental justice."

PRESIDENT JOE BIDEN, 2022 STATE OF THE UNION

What is the Justice40 Initiative?

For the first time in our nation's history, the Federal Government has made it a goal that 40 percent of the overall benefits of certain Federal investments flow to disadvantaged communities that are marginalized, underserved, and overburdened by pollution. President Biden made this historic commitment when he signed Executive Order 14008 within days of taking office.

ENERGY STAR

Insulation Tax Credit

Maximum credit: 30% (2022)

This credit is effective for projects placed in service between January 1, 2022 and December 31, 2022.

See the credits for 2022 and previous years.

You can claim:

30%
of project cost

\$1,200
maximum amount claimed

Geothermal Heat Pumps Tax Credit

Maximum credit: 30% (2022)

The following Residential Clean Energy Tax Credit amounts apply to the paid-for period:

- 25% for projects placed in service after December 31, 2019, and before January 1, 2021
- 20% for projects placed in service after December 31, 2020, and before January 1, 2022
- 10% for projects placed in service after December 31, 2021, and before January 1, 2023
- 5% for projects placed in service after December 31, 2022, and before January 1, 2024
- 0% for projects placed in service after December 31, 2023, and before January 1, 2025

See the credits for 2022 and previous years.

Exterior Doors Tax Credit

Maximum credit: 30% (2022)

This credit is effective for projects placed in service between January 1, 2022 and December 31, 2022.

See the credits for 2022 and previous years.

You can claim:

30%
of project cost

\$500
(\$500 per door)
maximum amount claimed

What products are eligible?

University of Iowa
Hansen Football Performance Center
Building lasting relationships





Context

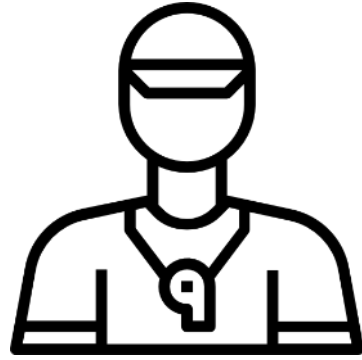


Photography by Paul Crosby



Project Goals

- Leading Big 10 facility
- Streamlined training
- Recruiting tool
- Game day experience for fans



CLIENT



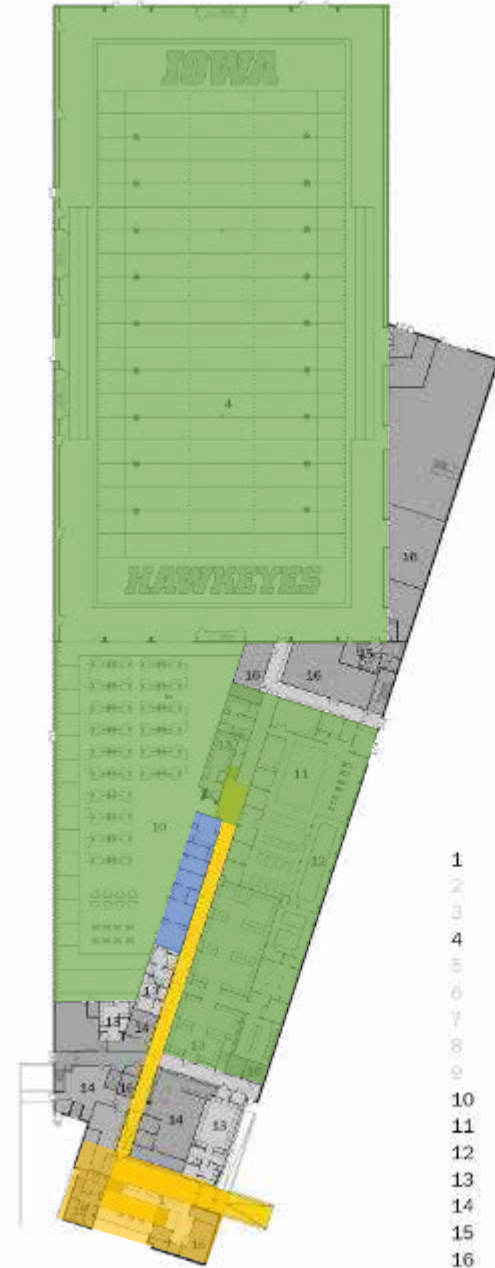
FANS



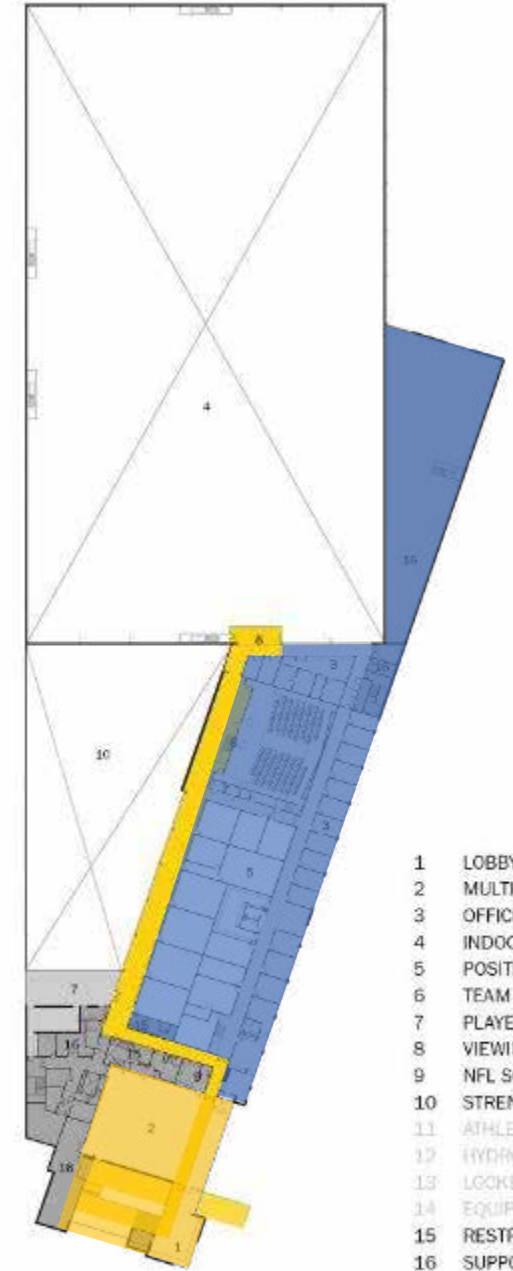
RECRUITS

LASTING RELATIONSHIPS

- Training
- Offices & Classrooms
- Public

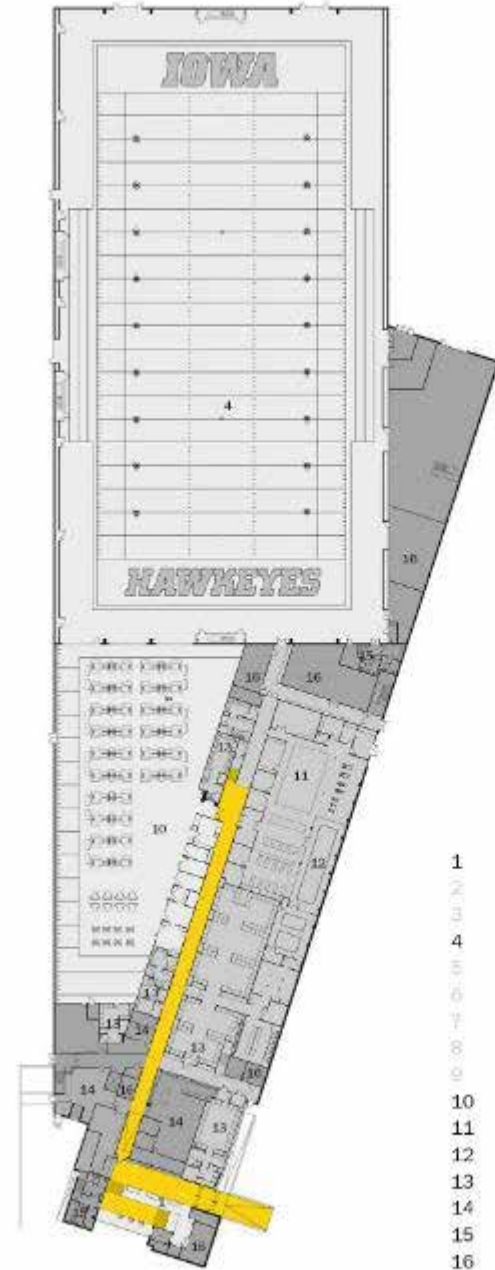


- 1 LOBBY
- 2 MULTI-PURPOSE
- 3 OFFICE ADMINISTRATION
- 4 INDOOR PRACTICE FIELD
- 5 POSITION ROOMS
- 6 TEAM MEETING
- 7 PLAYER LOUNGE
- 8 VIEWING PLATFORM
- 9 NFL SCOUT
- 10 STRENGTH CONDITIONING
- 11 ATHLETIC TRAINING
- 12 HYDROTHERAPY
- 13 LOCKER ROOMS
- 14 EQUIPMENT
- 15 RESTROOM
- 16 SUPPORT



- 1 LOBBY
- 2 MULTI-PURPOSE
- 3 OFFICE ADMINISTRATION
- 4 INDOOR PRACTICE FIELD
- 5 POSITION ROOMS
- 6 TEAM MEETING
- 7 PLAYER LOUNGE
- 8 VIEWING PLATFORM
- 9 NFL SCOUT
- 10 STRENGTH CONDITIONING
- 11 ATHLETIC TRAINING
- 12 HYDROTHERAPY
- 13 LOCKER ROOMS
- 14 EQUIPMENT
- 15 RESTROOM
- 16 SUPPORT





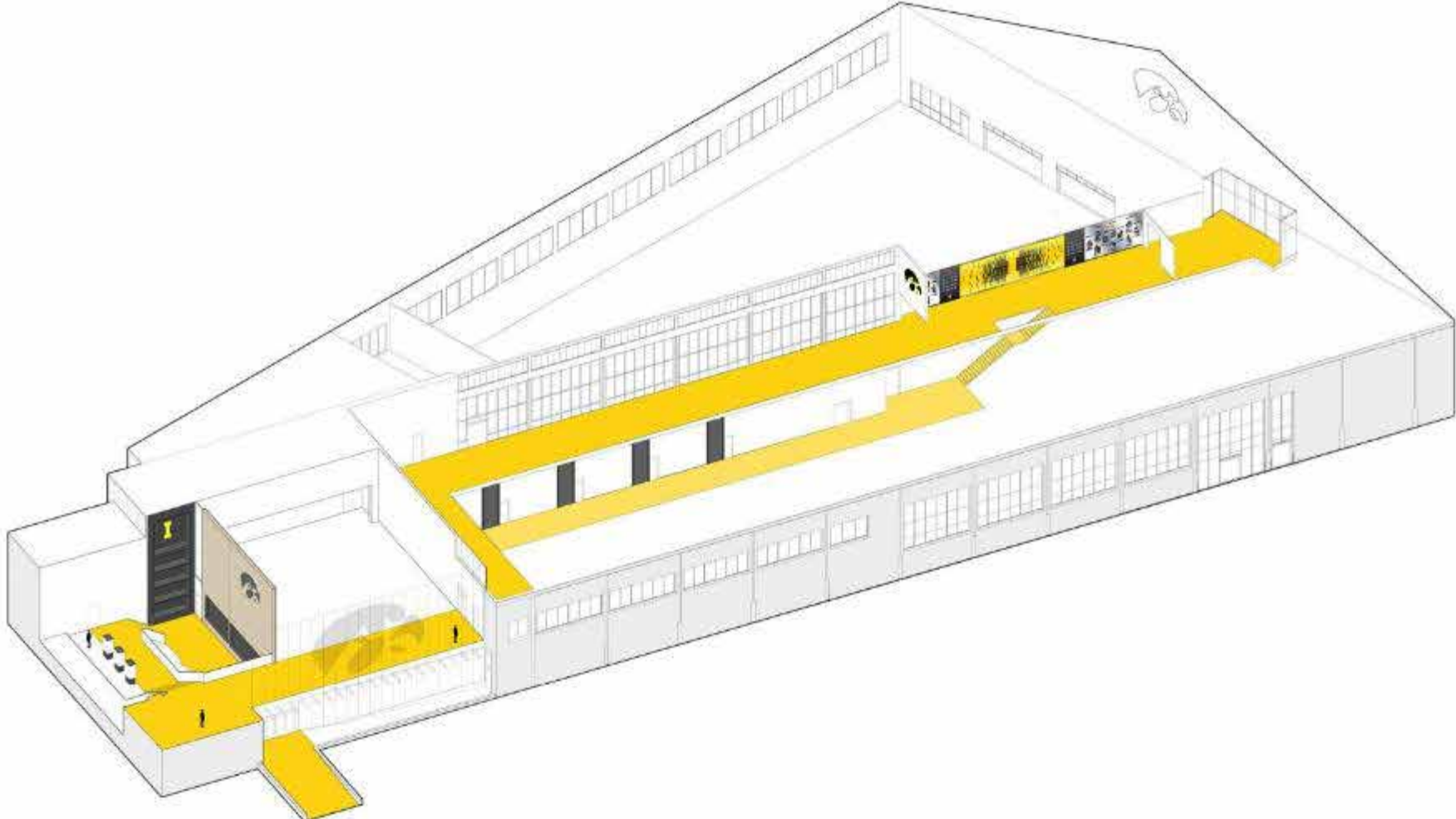
- 1 LOBBY
- 2 MULTI-PURPOSE
- 3 OFFICE ADMINISTRATION
- 4 INDOOR PRACTICE FIELD
- 5 POSITION ROOMS
- 6 TEAM MEETING
- 7 PLAYER LOUNGE
- 8 VIEWING PLATFORM
- 9 NFL SCOUT
- 10 STRENGTH CONDITIONING
- 11 ATHLETIC TRAINING
- 12 HYDROTHERAPY
- 13 LOCKER ROOMS
- 14 EQUIPMENT
- 15 RESTROOM
- 16 SUPPORT



- 1 LOBBY
- 2 MULTI-PURPOSE
- 3 OFFICE ADMINISTRATION
- 4 INDOOR PRACTICE FIELD
- 5 POSITION ROOMS
- 6 TEAM MEETING
- 7 PLAYER LOUNGE
- 8 VIEWING PLATFORM
- 9 NFL SCOUT
- 10 STRENGTH CONDITIONING
- 11 ATHLETIC TRAINING
- 12 HYDROTHERAPY
- 13 LOCKER ROOMS
- 14 EQUIPMENT
- 15 RESTROOM
- 16 SUPPORT



Recruiting path



LASTING RELATIONSHIPS



LASTING RELATIONSHIPS

Graphics integration



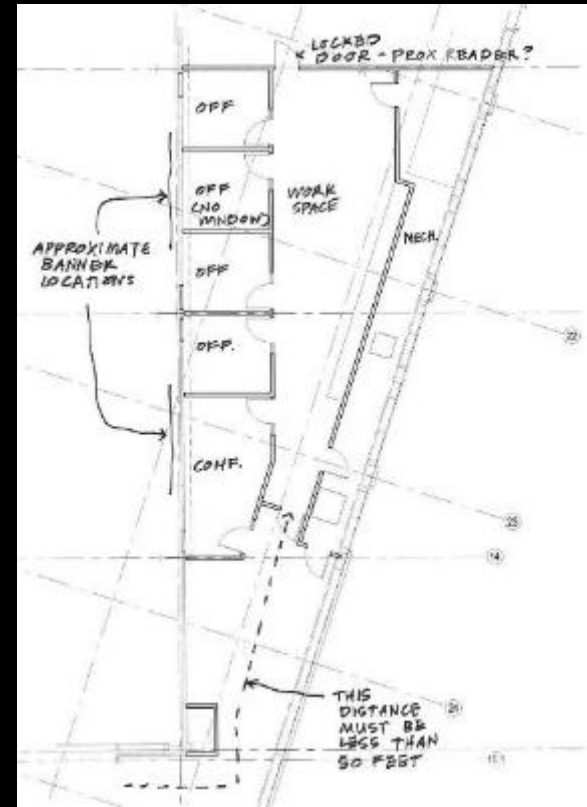
LASTING RELATIONSHIPS

Graphics integration



LASTING RELATIONSHIPS

Additional UI Football projects



LASTING RELATIONSHIPS

BIG10 UNIVERSITY FOOTBALL LOCKER ROOM

CENTRAL STATES DESIGN AWARDS | IOWA CITY, IA

Photography by Corey Gaffer

substancearchitecture

LASTING RELATIONSHIPS

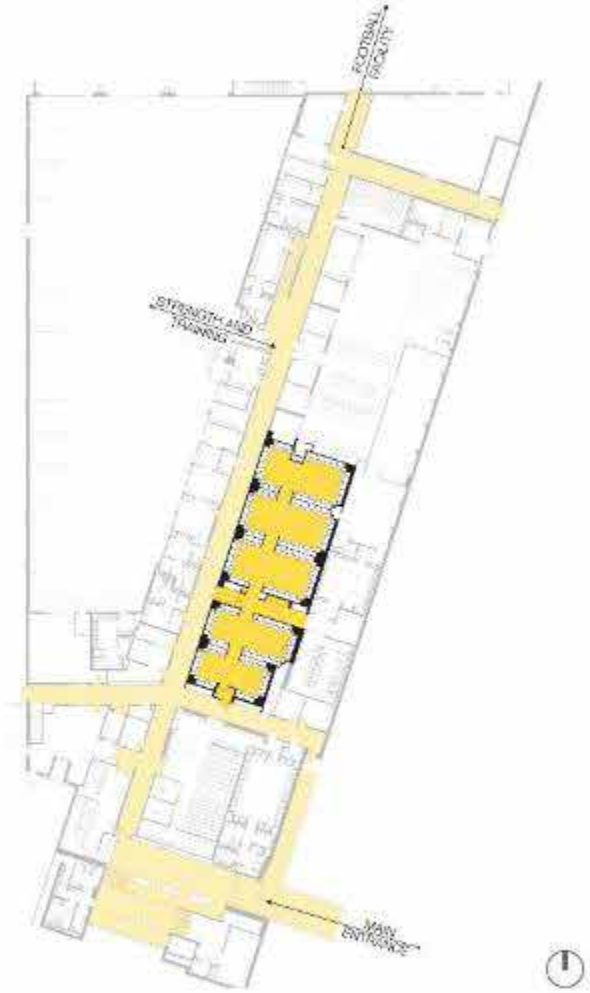
PROJECT NEEDS

- 1) Add Lockers
- 2) Unsightly Appearance
- 3) Brand Update
- 4) Replace Worn Finishes
- 5) Solution for Trash Bins





Photography by Corey Gaffer



CONTEXT WITHIN THE BUILDING: The project is an interior renovation of an existing football locker room, centrally positioned along a main circulation spine. Its placement provides direct access to adjacent athletic support spaces, enhancing operational flow within the building.

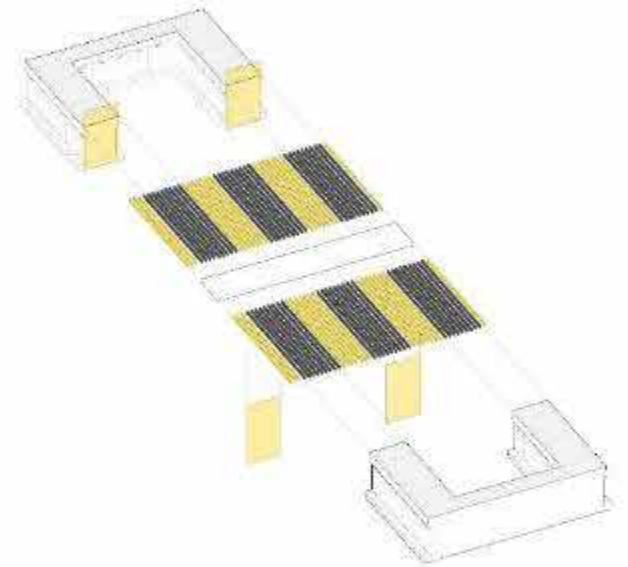


Diagram illustrating ceiling and end cap integration within the project.

RELATION TO STADIUM COLORS: The alternating black and gold baffles in the locker room ceiling mirror the striped color patterns of the stadium crowd, reinforcing a strong visual connection to team identity and game day atmosphere.

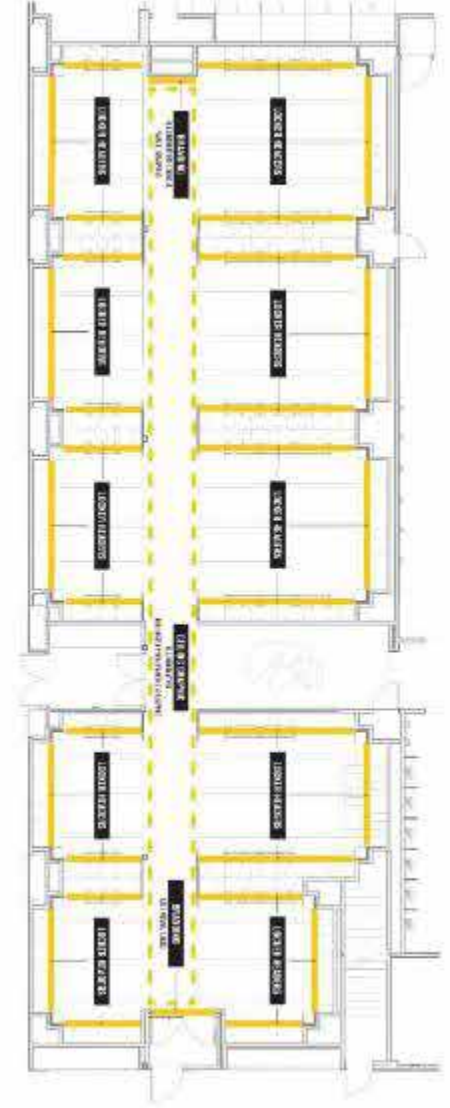
LASTING RELATIONSHIPS



Photography by Corey Gaffer



LIGHTING: Illuminated signage runs the length of the main corridor, with lighting precisely aligned within the dimensions of the ceiling baffles to create a clear visual rhythm. Subtle lighting integrated into the locker seating further accentuates the black and gold palette, enhancing depth and atmosphere throughout the space.



FLOOR PLAN



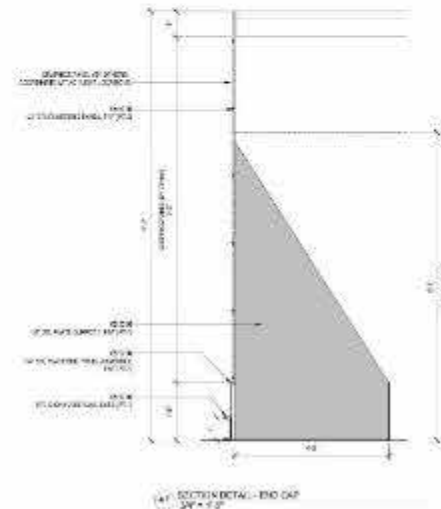


LOCKER ENDCAP PANEL // Q:6

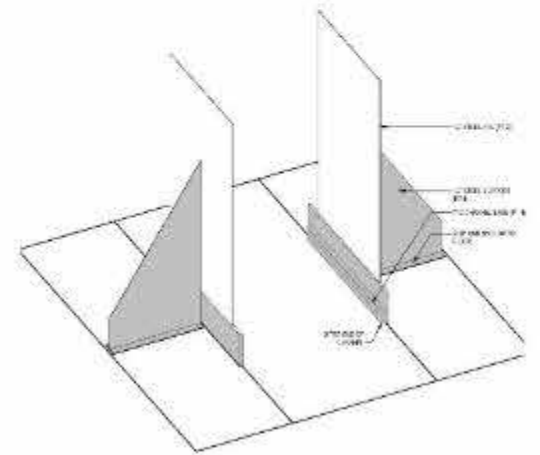


End cap panels installed.

MATERIALITY: During design, the architecture firm worked closely with the graphic designers to ensure cohesive visual integration throughout the space. The custom graphics are all seamlessly integrated with a refined material choices that elevate the bold black and gold team colors. With just a few carefully executed elements, the design achieves a clean, unified aesthetic that reinforces identity through simplicity and precision.



SECTION DETAIL - END CAP 3/4" x 1/2"



ISOMETRIC DETAIL - END CAP

LASTING RELATIONSHIPS



Photography by Corey Gaffer

THANK YOU

